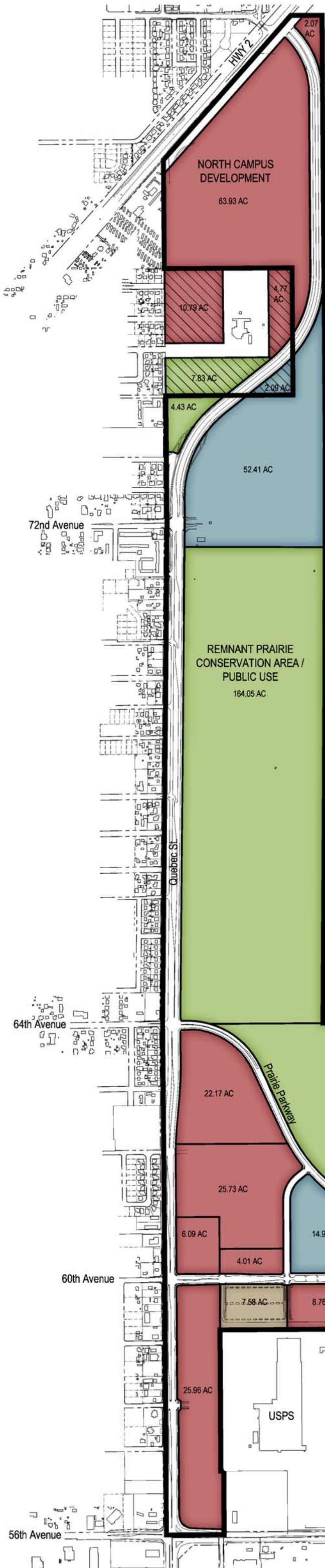




PRAIRIE GATEWAY LAND USE PLAN

COMMERCE CITY, COLORADO

JUNE 1, 2006



LAND USE SUMMARY

	STADIUM	15.00 AC
	PARKING	41.50 AC
	SPORTS COMPLEX	72.85 AC
	CIVIC CENTER / POTENTIAL PUBLIC USE	67.32 AC
	SOUTH CAMPUS DEVELOPMENT	176.87 AC
	NORTH CAMPUS DEVELOPMENT	66.00 AC
	VISITOR CENTER / OPEN SPACE AREA	188.26 AC
	REMNANT PRAIRIE CONSERVATION AREA / PUBLIC USE	168.48 AC
	RIGHT OF WAY	120.83 AC
TOTAL		917.11 AC

HALO PROPERTY "POTENTIAL LAND TRANSFER"

	ADDITIONAL NORTH CAMPUS DEVELOPMENT	15.56 AC
	ADDITIONAL REMNANT PRAIRIE CONSERVATION AREA	7.83 AC
	POTENTIAL PUBLIC USE	2.09 AC
TOTAL		25.48 AC

Rocky Mountain Arsenal
National Wildlife Refuge

Visitor Center

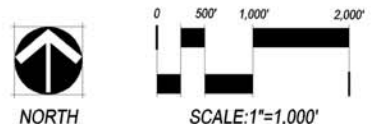
Central Park Blvd.

KSE
Kroenke Sports Enterprises

CITY
Commerce City

1101 Bannock Street
Denver, Colorado 80204
P 303.892.1166
F 303.892.1186
www.norris-design.com

NORRIS DESIGN
Planning | Landscape Architecture



This plan is conceptual and is subject to change without notice