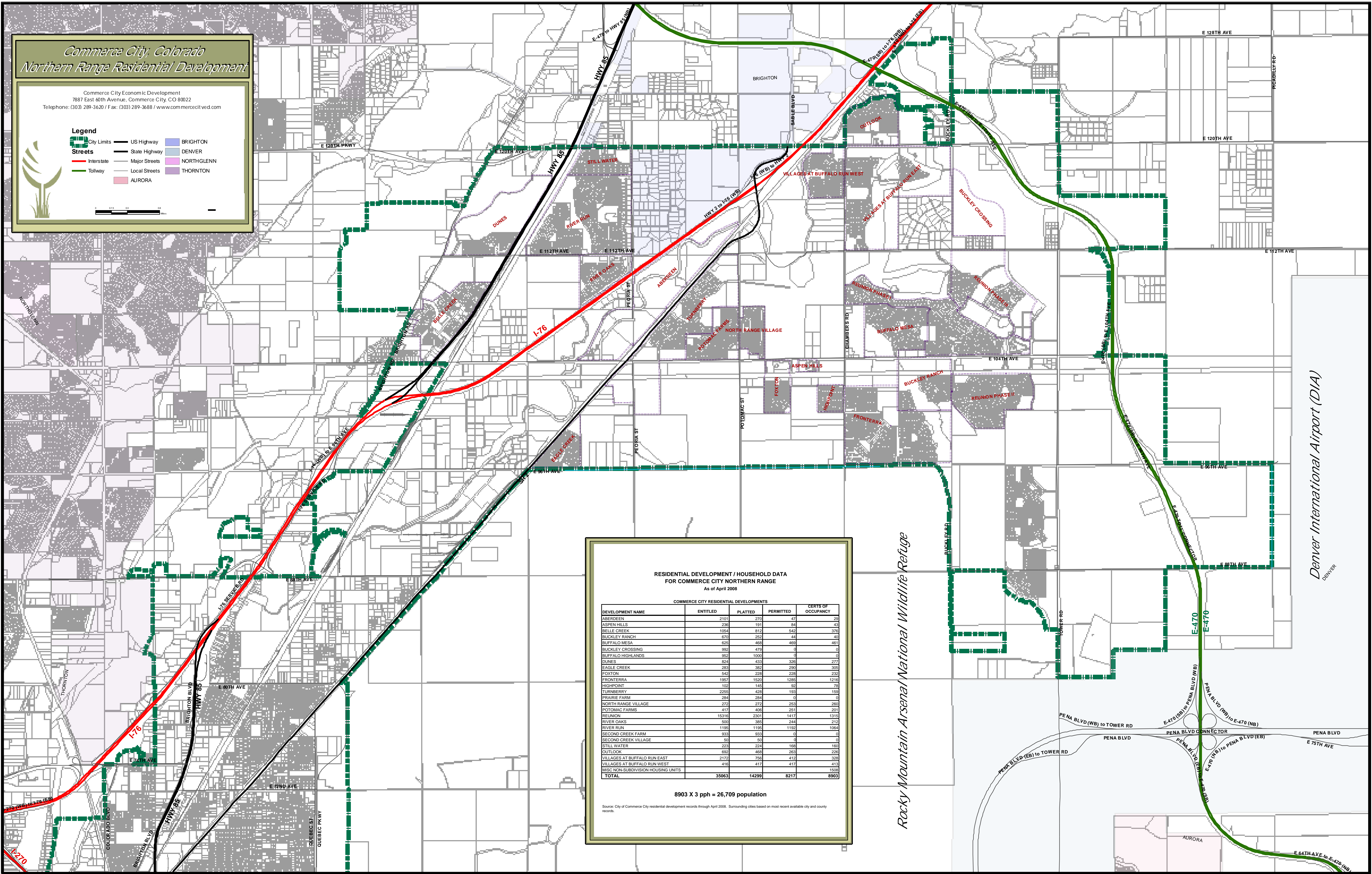
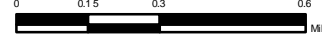


*Commerca City, Colorado  
Northern Range Residential Development*

Commerca City Economic Development  
7887 East 40th Avenue, Commerca City, CO 80022  
Telephone: (303) 289-3620 / Fax: (303) 289-3688 / www.commercacityed.com

**Legend**

- City Limits
- Interstate
- Tollway
- US Highway
- State Highway
- Major Streets
- Local Streets
- BRIGHTON
- DENVER
- NORTHGLENN
- THORNTON
- AURORA



**RESIDENTIAL DEVELOPMENT / HOUSEHOLD DATA  
FOR COMMERCA CITY NORTHERN RANGE**  
As of April 2008

COMMERCA CITY RESIDENTIAL DEVELOPMENTS				
DEVELOPMENT NAME	ENTITLED	PLATTED	PERMITTED	CERTS OF OCCUPANCY
ABERDEEN	2101	270	47	29
ASPEN HILLS	236	191	84	43
BELLE CREEK	1054	812	542	378
BUCKLEY RANCH	670	252	44	40
BUFFALO MESA	625	468	468	461
BUCKLEY CROSSING	992	478	4	0
BUFFALO HIGHLANDS	952	1000	0	0
DUNES	824	433	326	277
EAGLE CREEK	283	382	290	305
FOXTON	542	228	228	232
FRONTERRA	1957	1520	1285	1216
HIGHPOINT	103	145	93	78
TURNBERRY	2250	428	193	159
PRAIRIE FARM	284	284	0	0
NORTH RANGE VILLAGE	272	272	253	260
POTOMAC FARMS	417	406	251	201
REUNION	15316	2301	1417	1315
RIVER OAKS	500	385	244	212
RIVER RUN	1195	1195	1192	1054
SECOND CREEK FARM	933	933	0	0
SECOND CREEK VILLAGE	50	50	0	0
STILL WATER	223	224	168	160
OUTLOOK	692	468	253	226
VILLAGES AT BUFFALO RUN EAST	2172	766	412	328
VILLAGES AT BUFFALO RUN WEST	416	417	417	413
MISC NON-SUBDIVISION HOUSING UNITS				1508
<b>TOTAL</b>	<b>35063</b>	<b>14299</b>	<b>8217</b>	<b>8903</b>

**8903 X 3 pph = 26,709 population**

Source: City of Commerca City residential development records through April 2008. Surrounding cities based on most recent available city and county records.

Rocky Mountain Arsenal National Wildlife Refuge

Denver International Airport (DIA)